

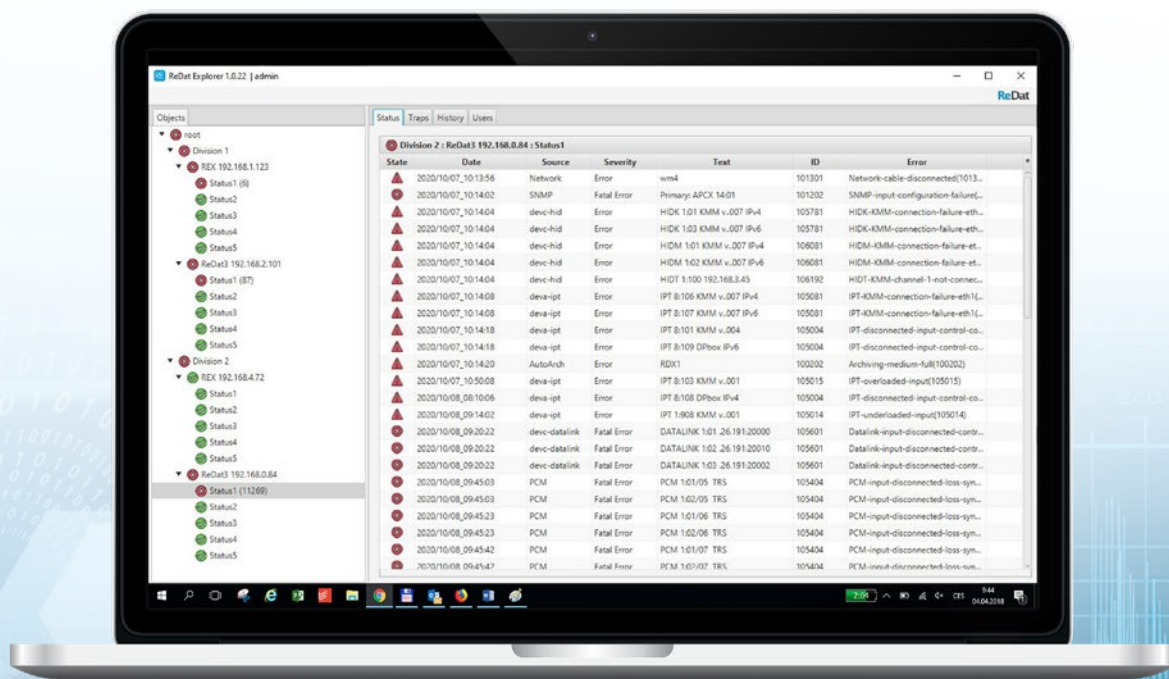
ReDat Explorer

“Application enabling network monitoring of ReDat[®] Recording System”

The new generation of “Explorer” follows the original generation, but with the addition of SNMP support. It is its own tool enabling network monitoring of the ReDat[®] Recording System, which provides an overview of the current status of individual devices as well as the history of fault conditions. ReDat Explorer is characterized by simple configuration and clear intuitive graphical interface.

GRAPHICAL INTERFACE

- The monitored devices are clearly displayed in a tree structure located in the left panel
- The tree is structured according to user-specified groups of devices, into which individual technical devices are included
- Below the devices, their statuses are displayed
- In the right panel, you can select to view details of statuses, traps, and status history
- Statuses contain a status counter
- Received SNMP traps can be marked as processed
- Each status change triggers an audiovisual alarm (An alert is displayed at the top of the screen and an audible alarm is played until the user confirm the alert)
- Every status change is recorded on the “History” tab



ReDat Explorer - Status

INSTALLATION

- Simple installer localized for Czech and English
- Requires Java 8 (for 64-bit OS included in the installer, for 32-bit OS must have Java pre-installed)

SUPPORTED TYPES OF DEVICES

- ReDat eXperience
- ReDat Recorder
- ReDat3 Recording Unit
- ReDat5 Recording Unit

PLANNED APP DEVELOPMENT

- Supervision of HW servers and their peripherals
- Support for SNMP version 3

SUPPORTED OPERATING SYSTEMS

- Desktop: Windows Vista, Windows 7, Windows 8, Windows 8.1, Windows 10
- Server: 2008 (Standard, R2 Standard), 2012, 2016, 2019

CONFIGURATION

- All monitored objects are configured using the menu in the left panel of the tree
- New users can be created with the following permission options: Edit users, Edit objects and Check traps

Status	Object	Group	Date & Time	Severity	Error ID	Error	Source	Message	Edited by
!	REX 4.70	Division 2	2020-10-08_16:10:28.298	Fatal Error	206001	Service-not-available(206001)	192.168.4.70	Failure of service	
!	REX 4.70	Division 2	2020-10-08_16:09:35.279	Warning	210008	Watchdog-cannot-find-in-ru...	192.168.4.70	java	
!	REX 4.70	Division 2	2020-10-08_16:08:33.970	Warning	210008	Watchdog-cannot-find-in-ru...	192.168.4.70	java	
!	REX 4.70	Division 2	2020-10-08_16:08:33.993	Fatal Error	206001	Service-not-available(206001)	192.168.4.70	Failure of service	
!	REX 4.70	Division 2	2020-10-08_16:08:32.507	Error	210003	Watchdog-Last-Write-test-fa...	192.168.4.70	redat-exp-conv...	
!	REX 4.70	Division 2	2020-10-08_16:07:32.175	Warning	210008	Watchdog-cannot-find-in-ru...	192.168.4.70	java	
!	REX 4.70	Division 2	2020-10-08_16:06:31.965	Warning	210008	Watchdog-cannot-find-in-ru...	192.168.4.70	java	
!	REX 4.70	Division 2	2020-10-08_16:05:31.522	Warning	210008	Watchdog-cannot-find-in-ru...	192.168.4.70	java	
!	REX 4.70	Division 2	2020-10-08_16:04:31.170	Warning	210008	Watchdog-cannot-find-in-ru...	192.168.4.70	java	
!	REX 4.70	Division 2	2020-10-08_16:04:29.146	Fatal Error	206001	Service-not-available(206001)	192.168.4.70	Failure of service	
!	REX 4.70	Division 2	2020-10-08_16:04:27.301	Error	210003	Watchdog-Last-Write-test-fa...	192.168.4.70	redat-exp-conv...	
!	REX 4.70	Division 2	2020-10-08_16:04:17.332	Fatal Error	206001	Service-not-available(206001)	192.168.4.70	Failure of service	
!	REX 4.70	Division 2	2020-10-08_16:03:26.957	Warning	210008	Watchdog-cannot-find-in-ru...	192.168.4.70	java	
!	REX 4.70	Division 2	2020-10-08_16:02:26.537	Warning	210008	Watchdog-cannot-find-in-ru...	192.168.4.70	java	
!	REX 4.70	Division 2	2020-10-08_16:01:25.983	Warning	210008	Watchdog-cannot-find-in-ru...	192.168.4.70	java	
!	REX 4.70	Division 2	2020-10-08_16:01:24.017	Fatal Error	206001	Service-not-available(206001)	192.168.4.70	Failure of service	
!	REX 4.70	Division 2	2020-10-08_16:01:22.538	Error	210003	Watchdog-Last-Write-test-fa...	192.168.4.70	redat-exp-conv...	
!	REX 4.70	Division 2	2020-10-08_16:00:22.395	Warning	210008	Watchdog-cannot-find-in-ru...	192.168.4.70	java	
!	REX 4.70	Division 2	2020-10-08_15:59:21.980	Warning	210008	Watchdog-cannot-find-in-ru...	192.168.4.70	java	
!	REX 4.70	Division 2	2020-10-08_15:58:21.391	Warning	210008	Watchdog-cannot-find-in-ru...	192.168.4.70	java	
!	REX 4.70	Division 2	2020-10-08_15:58:19.416	Fatal Error	206001	Service-not-available(206001)	192.168.4.70	Failure of service	
!	REX 4.70	Division 2	2020-10-08_15:58:18.005	Error	210003	Watchdog-Last-Write-test-fa...	192.168.4.70	redat-exp-conv...	
!	REX 4.70	Division 2	2020-10-08_15:57:17.623	Warning	210008	Watchdog-cannot-find-in-ru...	192.168.4.70	java	
!	REX 4.70	Division 2	2020-10-08_15:56:17.466	Warning	210008	Watchdog-cannot-find-in-ru...	192.168.4.70	java	
!	REX 4.70	Division 2	2020-10-08_15:55:17.218	Warning	210008	Watchdog-cannot-find-in-ru...	192.168.4.70	java	
!	REX 4.70	Division 2	2020-10-08_15:55:14.915	Fatal Error	206001	Service-not-available(206001)	192.168.4.70	Failure of service	
!	REX 4.70	Division 2	2020-10-08_15:55:13.180	Error	210003	Watchdog-Last-Write-test-fa...	192.168.4.70	redat-exp-conv...	
!	REX 4.70	Division 2	2020-10-08_15:54:12.779	Warning	210008	Watchdog-cannot-find-in-ru...	192.168.4.70	java	
!	REX 4.70	Division 2	2020-10-08_15:53:20.095	Error	220002	Watchdog-cannot-find-in-ru...	192.168.4.70	IP:192.168.4.70...	

ReDat Explorer - Traps

ReDat Recording Systems, a business division of RETIA, a.s., which provides a sophisticated system for recording voice, screen and other relevant data. The system automatically analyzes the data to make it available to system users in a clear and structured way.

RETIA, a.s. is a Czech company based in Pardubice, founded in 1993. It develops, manufactures and modernizes radars, command and control systems, UWB localization and communication systems and ReDat Recording Systems.