

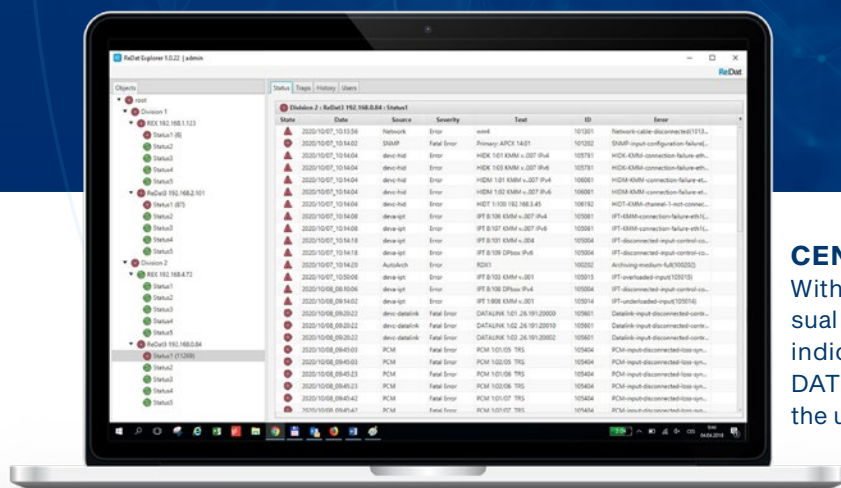
ReDAT Management System

Central administration and supervision of the ReDAT system

ReDAT Management System ensures the central administration and supervision of the ReDAT Recording System. Tools for the central administration and supervision are essential for all critical applications, such as for a recording system. These tools facilitate the regular and occasional technical administration of important recording systems.

ReDAT Recording Systems, a business division of RETIA, a.s., which provides a sophisticated system for recording voice, screen and other relevant data. The system automatically analyzes the data to make it available to system users in a clear and structured way.

RETIA, a.s. is a Czech company based in Pardubice, founded in 1993. It develops, manufactures and modernizes radars, command and control systems, UWB localization and communication systems and ReDAT Recording Systems.



CENTRAL APPLICATION

With ReDAT Management System any unusual conditions of the recording system are indicated in the module application. ReDAT Management System is divided into the unified structure of codes that are used throughout the system to simplify interpretation of error messages. ReDAT Management System communicates via SNMP that provides some advantages. The most significant advantage lies in the standardization of this common protocol and independence on the controlling application.

SECOND MODEL

In the second case our customer has no supervision application and RETIA ensures support for the supervision application via ReDAT Explorer that will provide all necessary functionalities. ReDAT Management System application monitors and supervises all parts of the ReDAT Recording System and administrates error messages. Alternatively, another commercially available SNMP client can be used, eg: NetXMS.

FIRST MODEL

The first model is when ReDAT Management System is incorporated into the customer's supervision application. In that case the customer has been already operating his own monitoring system running on SNMP, and the system has already been following all parts of the network. Then only the ReDAT Recording System's elements are supplemented into the current system and that system remains supervised by the existing means.

SNMP protocol (Simple Network Management Protocol) is an asynchronous, transaction oriented protocol based on the client/server model. The side that sends requests (SNMP manager) can be a simple browser or a complex network Management System. On the device side there is a SNMP agent that replies to all requests. An exception is for "traps" that are sent by agents asynchronously if non-standard events arise (e.g. if the limit is exceeded).