

# ReDat

## Recording

### ReDat Explorer

Network monitoring of  
ReDat recording system

The new generation of ReDat Explorer supports SNMP. A unique tool enabling network supervision of the ReDat Recording Systems, provides an overview of the current status of individual devices as well as the history of fault conditions. ReDat Explorer is characterized by simple configuration and clear intuitive graphical interface.



## GRAPHICAL INTERFACE

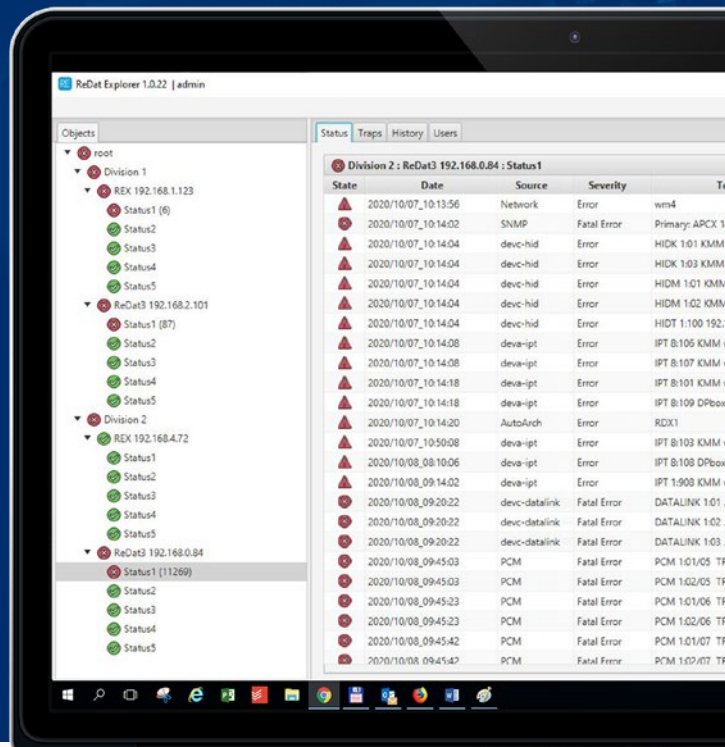
- The monitored devices are clearly displayed in a tree structure located in the left panel
- The tree is structured according to user-specified groups of devices, into which individual technical devices are included
- Below the devices, their statuses are displayed
- In the right panel, you can select to view details of statuses, traps, and status history
- Statuses contain a status counter
- Received SNMP traps can be marked as processed
- Each status change triggers an audiovisual alarm (An alert is displayed at the top of the screen and an audible alarm is played until the user confirm the alert)
- Every status change is recorded on the "History" tab

## INSTALLATION

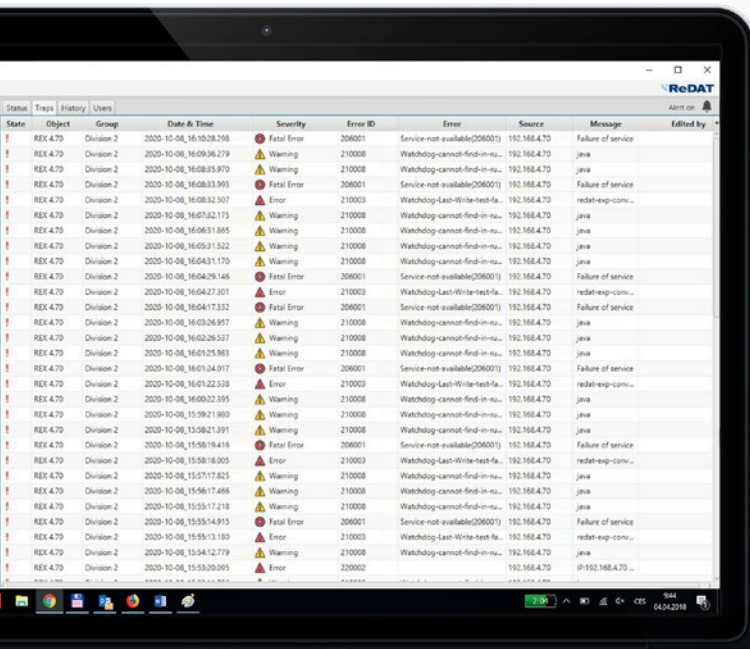
- Simple installer localized for Czech and English
- Requires Java 8 (for 64-bit OS included in the installer, for 32-bit OS must have Java pre-installed)

## SUPPORTED TYPES OF DEVICES

- ReDat eXperience
- ReDat Recorder
- ReDat3 Recording Unit
- ReDat5 Recording Unit
- integration of third party objects (managed by SNMP)



ReDat Explorer - Status



ReDat Explorer - Traps

## SUPPORTED OPERATING SYSTEMS

- Desktop: Windows 8/8.1/10/11
- Server: 2016/2019/2022

## CONFIGURATION

- All monitored objects are configured using the menu in the left panel of the tree

## PLANNED APP DEVELOPMENT

- Supervision of HW servers and their peripherals

ReDat Recording Systems provides a sophisticated system for recording voice, screen and other relevant data. The system automatically analyzes the data to make it available to system users in a clear and structured way.